

THE BIG REVEAL
MEET THE FINALISTS IN
IDA 2022

99+ pages of
SUBLIME INSPIRATION



COAST WATCH

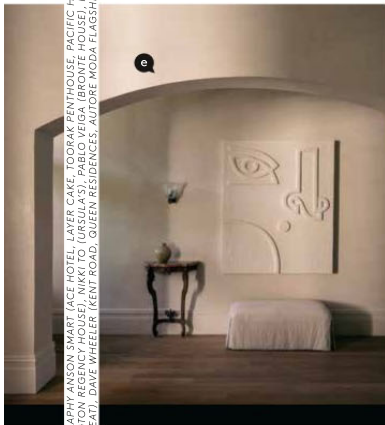
Rooms with a blue view



VINTAGE MEETS
LUXURY

At work with TAMSIN JOHNSON





The Finalists
INTERIOR DESIGNER OF THE YEAR

- FLACK STUDIO [a Ace Hotel]
- ALEXANDER & CO. [b Pacific House]
- ARENT&PYKE [c Layer Cake]
- GREG NATALE [d Toorak Penthouse]
- HANDELSMANN + KHAW [e Paddington Regency House]

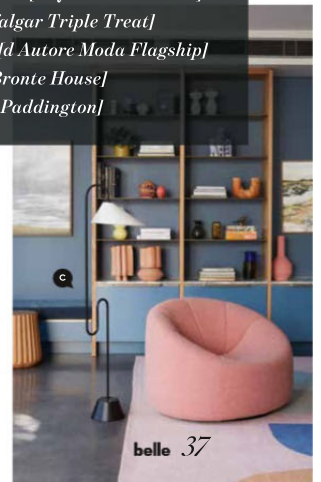
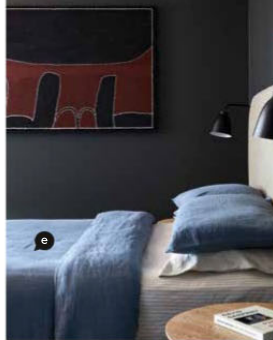


PHOTOGRAPHY ANSON SMART [a ACE HOTEL, LAYER CAKE, TOORAK PENTHOUSE, PACIFIC HOUSE], FELIX FOREST [b PACIFIC HOUSE], JAMES WILSON [c LAYER CAKE], ANDREW HARRISON [d TOORAK PENTHOUSE], TRIPLE TREAT, DAVE WHEELER [e QUEEN RESIDENCES, AUTORE MODA FLAGSHIP]



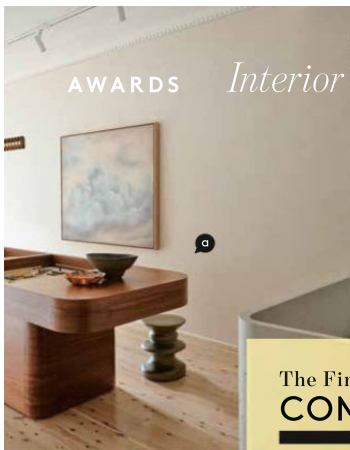
The Finalists
EMERGING DESIGN STAR

- JACKET CURATED AND MOLNAR ARCHITECTS [a Kent Road]
- CARLA BARTON DESIGN STUDIO [b Queen Residences]
- ALTUS DESIGN STUDIO [c Trafalgar Triple Treat]
- ALEX MORRISON INTERIORS [d Autore Moda Flagship]
- JILLIAN DINKEL DESIGNS [e Bronte House]
- BRAHMAN PERERA [f Ursula's Paddington]

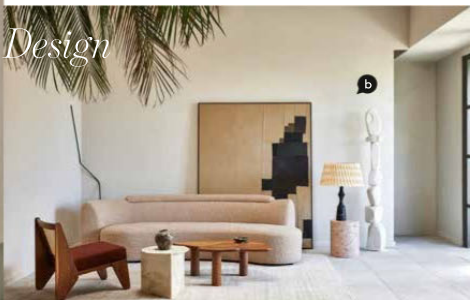


AWARDS

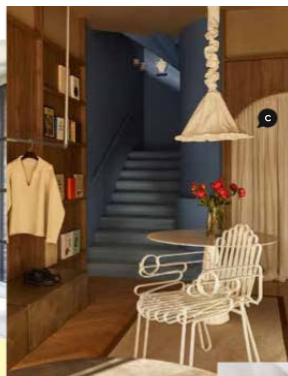
Interior Design



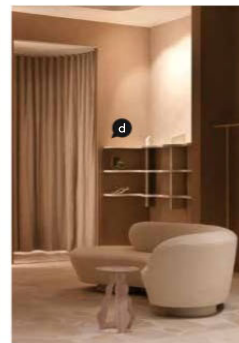
a



b



c



d

The Finalists COMMERCIAL INTERIOR

- ALEXANDER & CO. *LO&CO* [a]
- DANIEL BODDAM STUDIO *Wyer & Co* [b]
- BRAHMAN PERERA *Henne* [c]
- ESOTERIKO *Rachel Gilbert* [d]
- STUDIO TATE *Relinque* [e]
- ALEX MORRISON INTERIORS *Autore Moda Flagship* [f]
- BIASOL STUDIO *Insight Body and Mind* [g]
- STUDIO PRINEAS *Sheeth Headquarters* [h]
- SJB *Yirranma Place* [i]



i



h



f

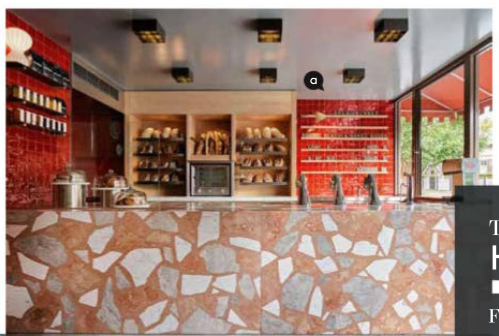


e



g

PHOTOGRAPHY DAVE WHEELER (AUTORE MODA FLAGSHIP, RACHEL GILBERT), ANSON SMART (LO&CO, YIRRANMA PLACE, GENOVESE COFFEE HOUSE, ACE HOTEL SYDNEY), LUCY WHEELER (ENTRECÔTE PRAHRAN), ALAN JENSEN (OSBORN HOUSE), SEAN FENNESSY AND TOM BLACHFORD (SOCIETY), GAVIN GREEN (SHEETH HEADQUARTERS)



a



b



c

The Finalists HOSPITALITY INTERIOR

- FLACK STUDIO *Breadwinner* [a]
- ALEXANDER & CO. *Genovese Coffee House* [b]
- BRAHMAN PERERA *Entrecôte Prahran* [c]
- FLACK STUDIO *Ace Hotel Sydney* [d]
- RUSSELL & GEORGE *Society* [e]
- LUCCHETTI KRELLE *Arturo's* [f]
- MAC DESIGN STUDIO IN COLLABORATION WITH LINDA BORONKAY DESIGN STUDIO *Osborn House* [g]



g



f



d